

ANGLO-CHINESE SCHOOL
(JUNIOR)



SEMESTRAL ASSESSMENT 2 (2008)
PRIMARY 3

SCIENCE
BOOKLET A

Thursday 23rd October 2008

1 hour 30 minutes

Name : _____ ()

Class : P 3 _____

INSTRUCTIONS TO PUPILS

DO NOT TURN OVER THE PAGES UNTIL YOU ARE TOLD TO DO SO

Follow all instructions carefully.
There are 20 questions in this booklet.
Answer **ALL** questions.

INFORMATION FOR PUPILS

The total marks for this booklet is 40.
The total time for Booklets A and B is 1 hour 30 minutes.

This question paper consists of 9 printed pages. (Inclusive of cover page)

Section A (40 marks)

For each question from 1 to 20, four options are given. One of them is the correct answer. Make your choice (1, 2, 3 or 4). Shade the correct oval (1, 2, 3 or 4) on the Optical Answer Sheet.

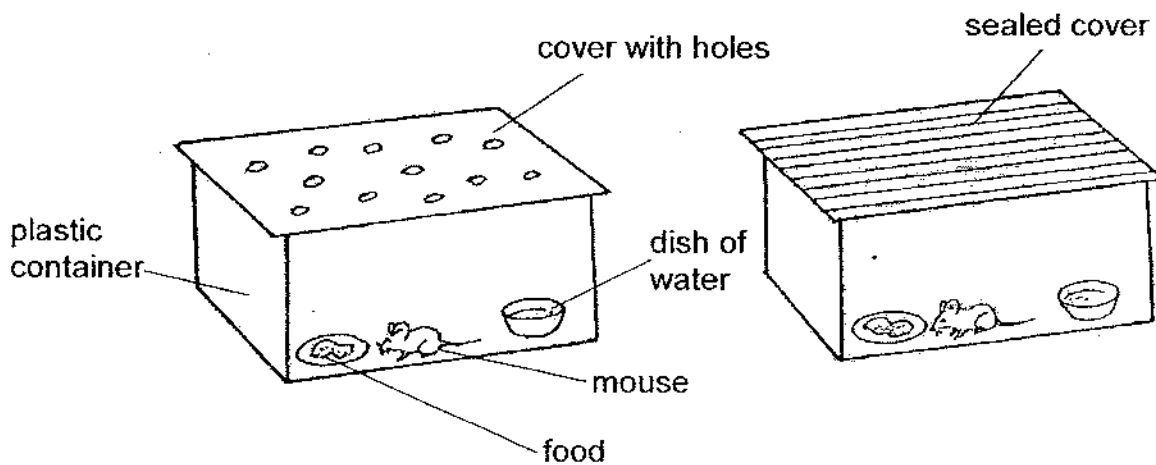
1 Noel classified some animals into two groups as shown.

Animals that give birth	Animals that lay eggs
Cow Goat Tiger	Frog Centipede Grasshopper

Which one of the following animals could be placed together with the animals which lay eggs?

- (1) panda
- (2) dolphin
- (3) hamster
- (4) platypus

2 John conducted the following experiment.



Based on the above experiment, ~~Jason~~^{John} wanted to find out if the mouse needs _____ to survive.

- (1) air
- (2) food
- (3) a box
- (4) water

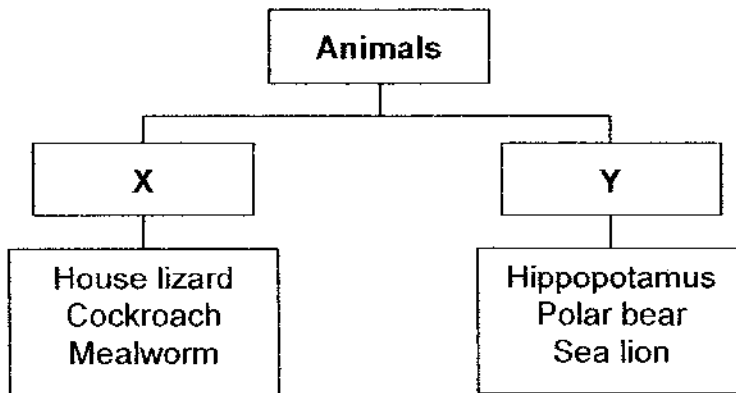
3 Tom found an animal near a pond. He observed that the animal has the following characteristics:

- It feeds on insects.
- It lays eggs in the water.
- It has a soft and moist skin.
- It can move about in more than one way.

The animal which Tom found is **most likely** to be a _____.

- (1) frog
- (2) guppy
- (3) penguin
- (4) dragonfly

4 Study the following classification table below.



Which of the following sets of headings are suitable for X and Y?

	X	Y
A	Plant-eaters	Animal-eaters
B	Animals without fur or hair	Animals with fur or hair
C	Animals that lay eggs	Animals that give birth
D	Animals that live on land only	Animals that live in water only

- (1) A and B only
- (2) A and D only
- (3) B and C only
- (4) C and D only

5 Which one of the following animals does not belong to the same group as the others?

- (1) Bat
- (2) Dove
- (3) Eagle
- (4) Mynah

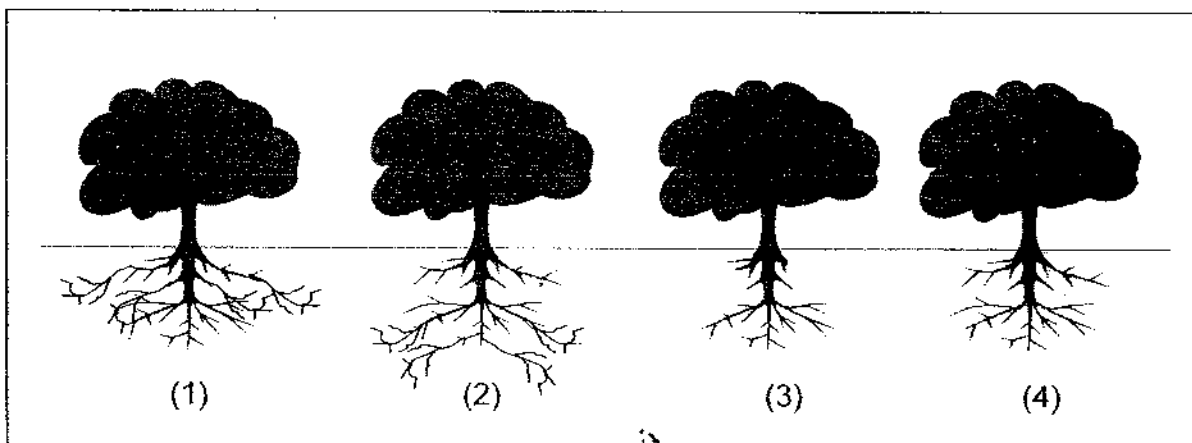
6 The table below shows the characteristics of four animals, C, D, E and F.

Animal	Number of legs				Feelers	Wings
	2	4	6	8		
C	✓					✓
D		✓				
E			✓		✓	✓
F				✓		

Which animals, C, D, E or F, could be the cricket and emu?

	Cricket	Emu
(1)	C	E
(2)	D	F
(3)	E	C
(4)	F	D

7 The diagram below shows some trees in a park. One of them was uprooted during a thunderstorm. Which tree is the most likely to be the one that was uprooted?



- 8 The living things shown below are grouped together based on a common characteristic.



fern



carrot



orchid

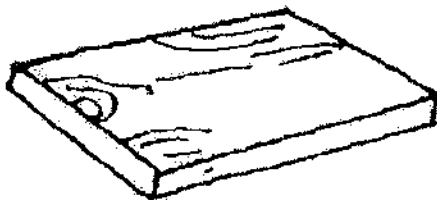


banana

The common characteristic is that they all _____.

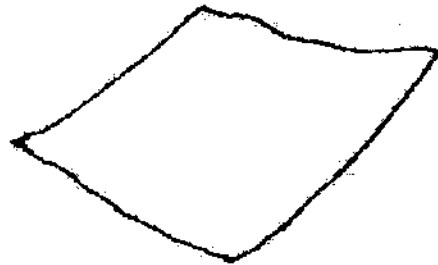
- (1) produce seeds
 - (2) produce flowers
 - (3) reproduce by spores
 - (4) have chlorophyll in their leaves
- 9 Which one of the following items is **most likely** to show signs of fungi growing on it after a few days?

(1)



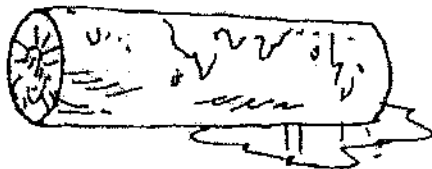
dry wooden plank

(2)



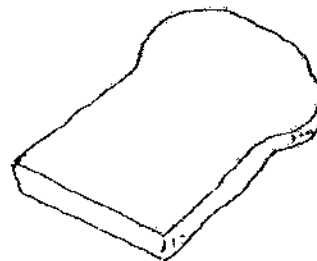
clean, dry writing paper

(3)



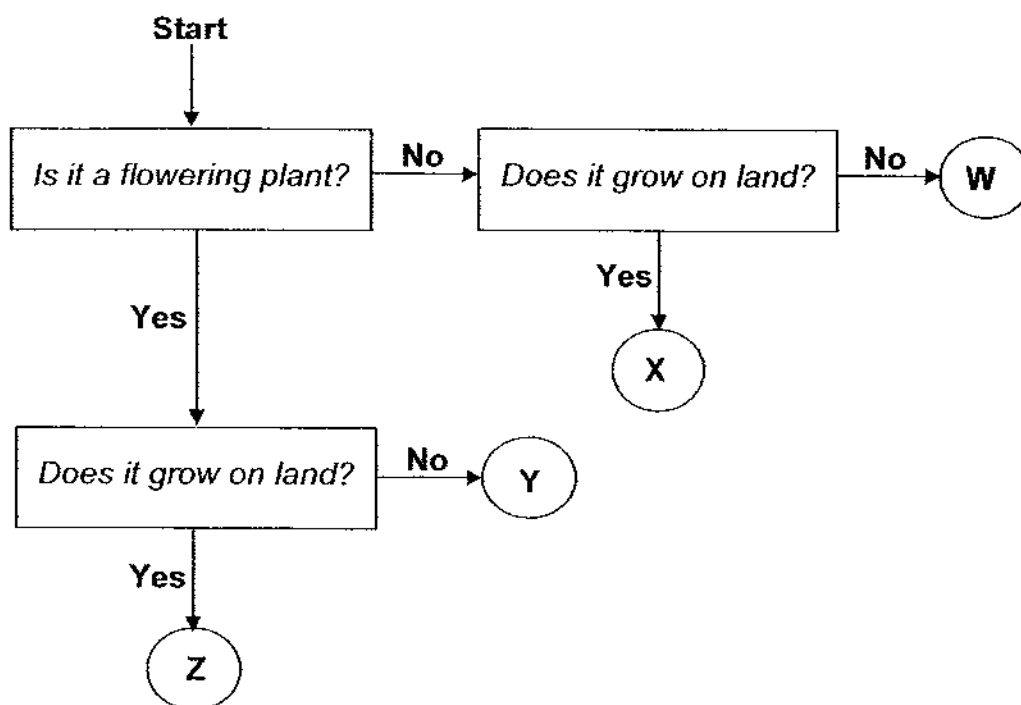
wet log

(4)



toasted slice of bread

- 10 Mr Tan provided Timothy with some information about plants in the flowchart below.



Which of the following could be Plants X and Y?

	Plant X	Plant Y
(1)	Rose	Ixora
(2)	Ixora	Moss
(3)	Moss	Lotus
(4)	Lotus	Rose

- 11 Plastics are often used to make raincoats. Which of the following statements explain why plastics make suitable materials for raincoats?

- A: Plastics are light.
 B: Plastics are strong.
 C: Plastics are flexible.

- (1) B only
 (2) A and B only
 (3) A and C only
 (4) B and C only

12 Which of the following is **not** a fungi?

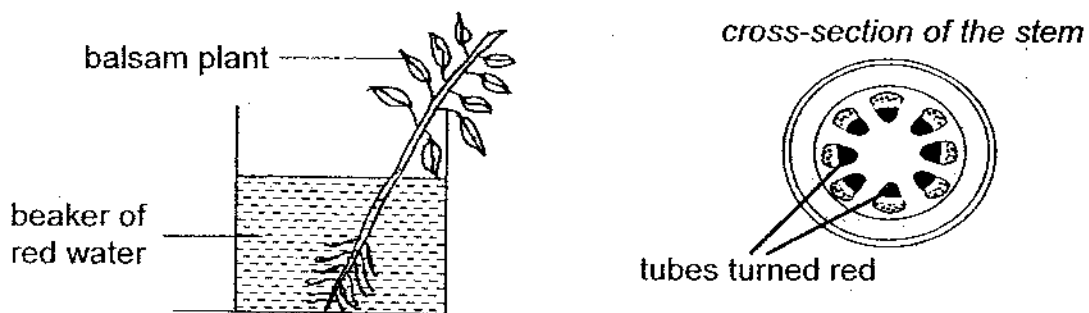
- (1) Puff ball
- (2) Bacteria
- (3) Toadstool
- (4) Mushroom

13 John was given four types of paper bags. He put oranges, one at a time, into the bags until they tore. He recorded the number of oranges he could put in the bags before they tore in the table below.

Based on the results of John's experiment, which type of paper is the strongest?

	Type of paper used to make bag	Number of oranges placed in the bag before it tore
(1)	Newspaper	4
(2)	Wax paper	10
(3)	Construction paper	7
(4)	Tissue paper	2

14 Bryan put a balsam plant in a beaker of red water as shown in the diagram below. After a few days, he noticed that the leaves had turned red. He then cut the stem of the plant and noticed that the tubes in the stem had also turned red.



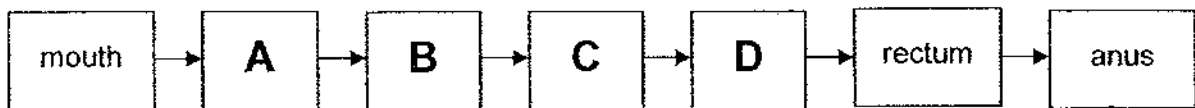
Based on the results of the experiment, Bryan can conclude that the tubes in the stem _____

- (1) stores water for the plant
- (2) makes food for the plant using water
- (3) holds the plant upright to obtain the most sunlight
- (4) transports water from the roots to the rest of the plant

15 Undigested food goes into the _____ where most of the water is removed ^{from} ~~from~~ the food.

- (1) anus
- (2) stomach
- (3) large intestine
- (4) small intestine

16 The flowchart below shows the route taken by food through the human digestive system.



Besides the mouth, in which other parts of the system are digestive juices produced?

- (1) A and B only
- (2) B and C only
- (3) B and D only
- (4) C and D only

17 Which two systems work together to supply oxygen to all parts of the body?

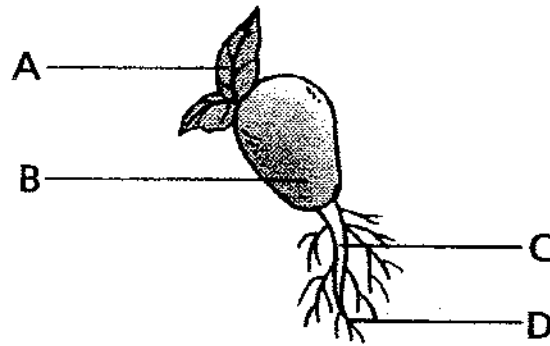
- A: Skeletal system
- B: Digestive system
- C: Circulatory system
- D: Respiratory system

- (1) A and B only
- (2) A and D only
- (3) B and C only
- (4) C and D only

18 The human skeleton _____.

- (1) helps in the digestion of food
- (2) helps the human body to move
- (3) keeps the heart pumping continuously
- (4) enables blood to flow throughout the body

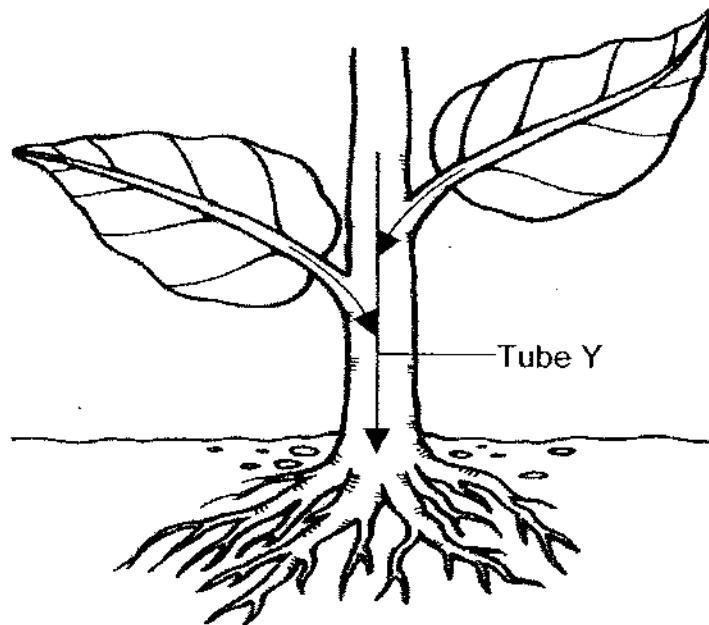
19 The diagram below shows a seedling.



Part ____ will make food when the seedling becomes an adult plant.

- (1) A
- (2) B
- (3) C
- (4) D

20 The picture below shows the direction of the movement of substances transported by the tiny tubes found in the stem of a plant.



What substance(s) do/does Tube Y carry?

- (1) Food
- (2) Food and carbon dioxide
- (3) Water and carbon dioxide
- (4) Water and dissolved mineral salts

**ANGLO-CHINESE SCHOOL
(JUNIOR)**



**SEMESTRAL ASSESSMENT 2 (2008)
PRIMARY 3
SCIENCE
BOOKLET B**

Thursday 23rd October 2008

1 hour 30 minutes

Name : _____ ()

Class : P3-_____

INSTRUCTIONS TO PUPILS

DO NOT TURN OVER THE PAGES UNTIL YOU ARE TOLD TO DO SO

Follow all instructions carefully.

There are 16 questions in this booklet.

Answer **ALL** questions.

INFORMATION FOR PUPILS

The number of marks is given in brackets [] at the end of each question or part question.

The total marks for this booklet is 40.

The total time for Booklets A and B is 1 hour 30 minutes.

This question paper consists of 12 printed pages. (Inclusive of cover page)

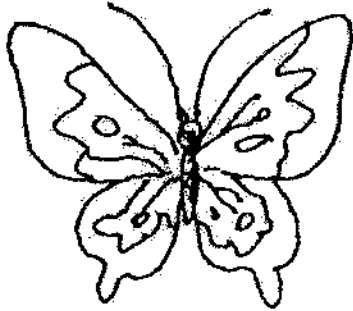
Question Numbers	Possible Marks	Marks Obtained
21	3	
22	3	
23	3	
24	2	
25	3	
26 - 27	4	
28 - 29	5	
30 - 31	5	
32 - 33	5	
34	3	
35 - 36	4	

Booklet A	/ 40
Booklet B	/ 40
Total	/ 80

Section B (40 marks)

Write your answers to questions 21 to 36 in the spaces provided. The number of marks awarded is shown in the brackets [] at the end of each question or part question.

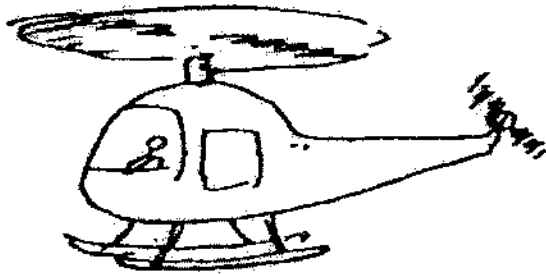
21 The diagram below shows four things.



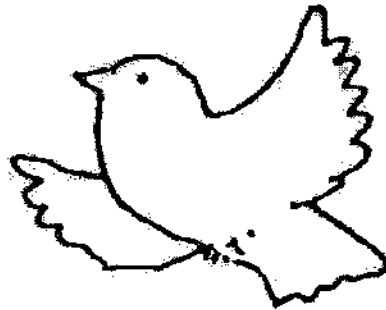
butterfly



plane



helicopter



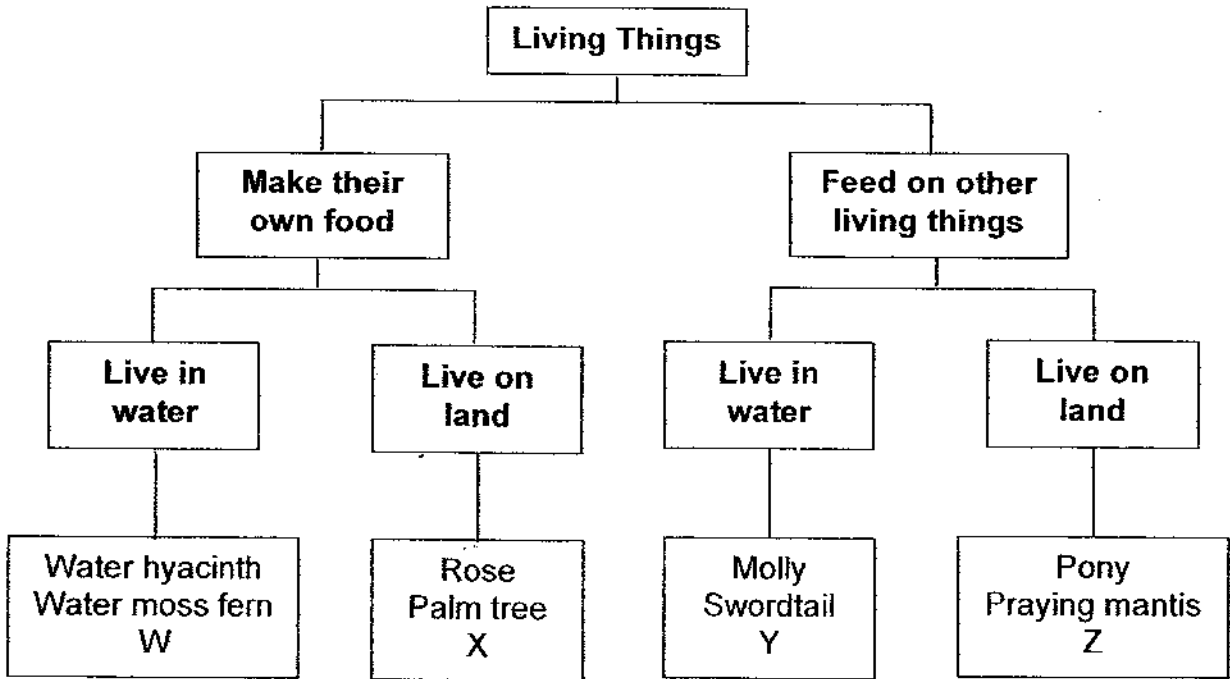
bird

(a) State one way in which the four things are similar. (Do not compare sizes) [1]

(b) Classify the objects using the table below. [2]

Living Things	Non-living Things

22 Alice grouped some living things using the classification table below.



(a) Based on the classification table, how is the water moss fern different from the swordtail? [1]

(b) Based on the classification table, how is the pony similar to the palm tree? [1]

(c) Which of the following, W, X, Y or Z, could be allamanda? [1]

23 Fiona was shown some information about some animals in the table below.

Animal	Number of Legs	Diet	Where they live
P	6	Plants	Garden
Q	4	Animals	River
R	6	Plants	Garden
S	4	Animals	River
T	6	Animals	Field

She grouped the animals as shown in the table below.

Group E	Group F
Animal Q	Animal P
Animal S	Animal R
	Animal T

- (a) Based on the above grouping, what characteristic did Fiona use to group the animals? [2]

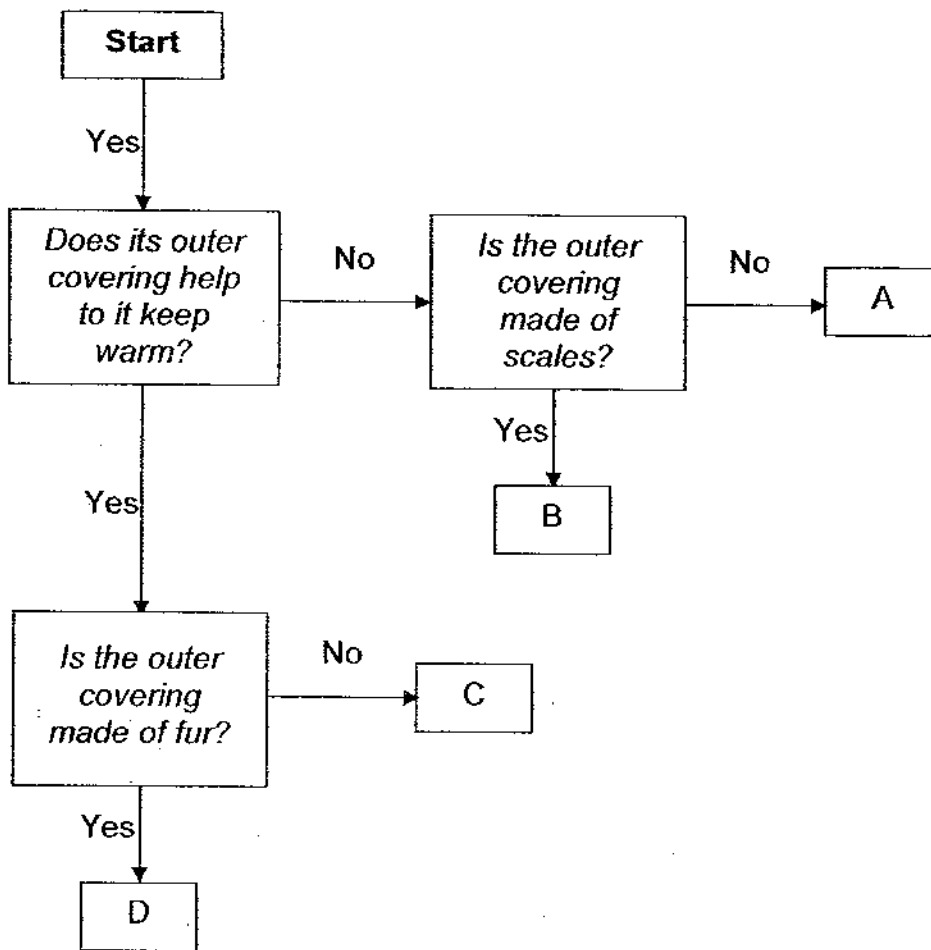
Group E: _____

Group F: _____

- (b) Her classmate, Max, suggested that the animals can be grouped in another way. What characteristic did Max have in mind? [1]

--

24 Study the following flowchart.



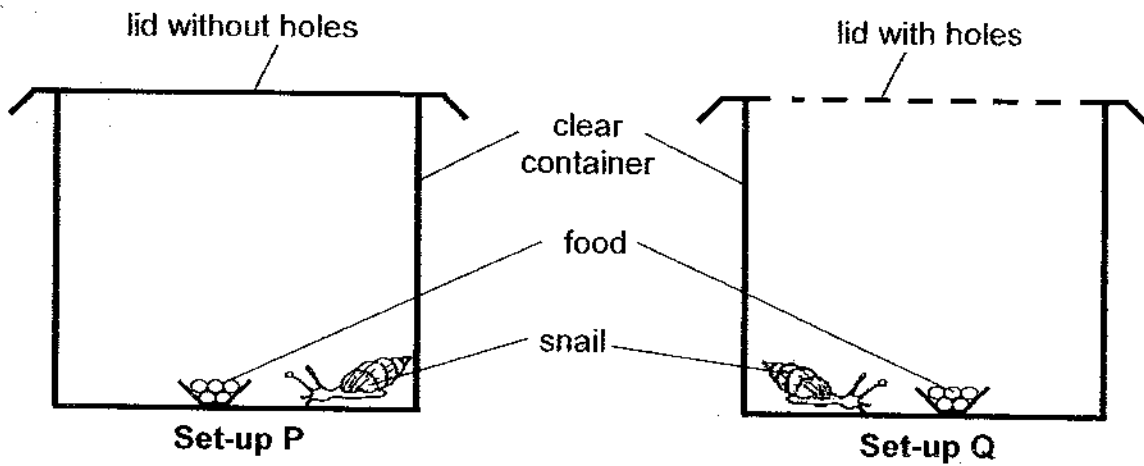
Based on the flowchart above, match the following animals to the correct letter. [2]

	Animal	Letter
(a)	Owl	
(b)	Prawn	
(c)	Polar bear	
(d)	House lizard	

B 4

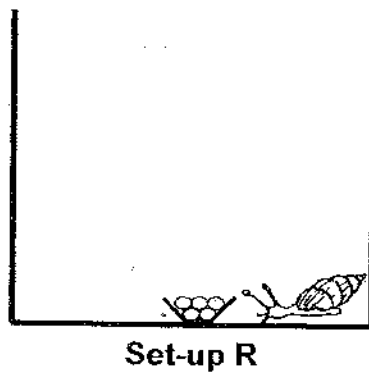
Sub-total:

25 Natasha set up the experiment as shown below. She used similar snails and containers for the experiment.

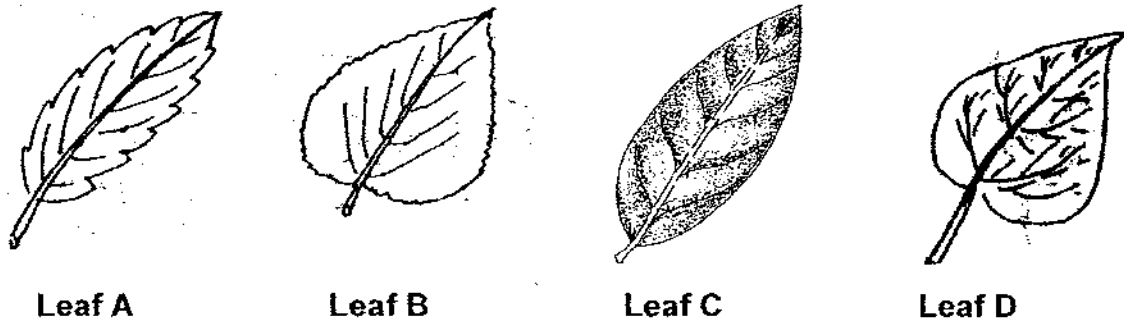


(a) After three days, she concluded that the snails needed air to survive. What did she observe to enable her to make the above conclusion? [1]

(b) Natasha wants to find out if living things need water. Complete the diagram below for Set-up R to show how it should look like so that she can use it to compare with Set-up Q. Label the parts which you have drawn. [2]



26 The diagram below shows four leaves taken from different plants.



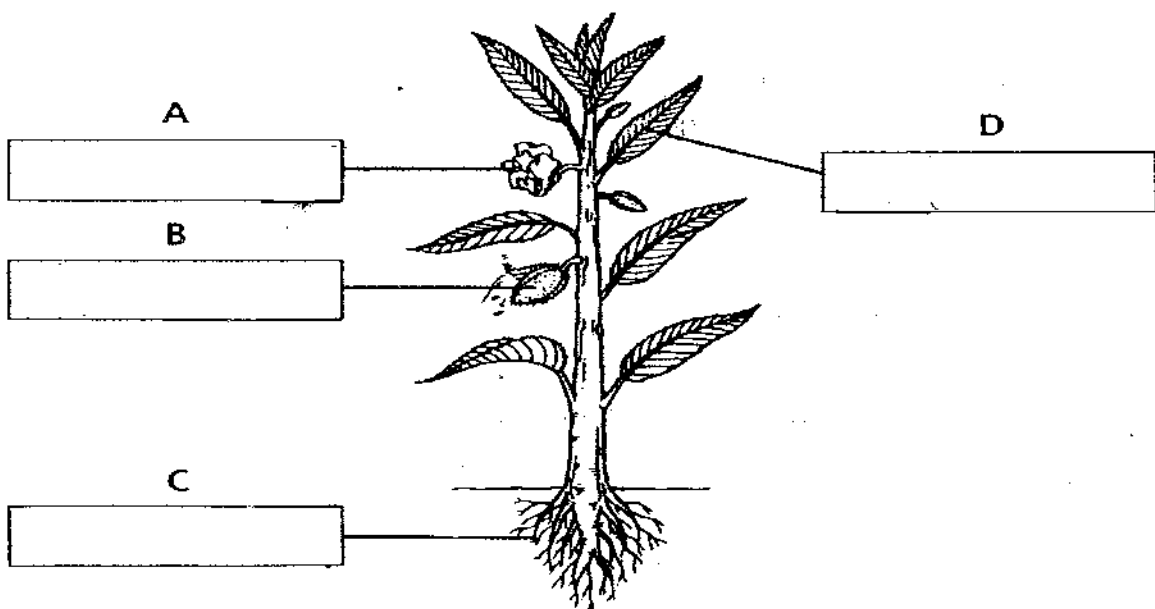
May classified them according to a similarity in their characteristics.

Group 1	Group 2
Leaf A	Leaf B
Leaf C	Leaf D

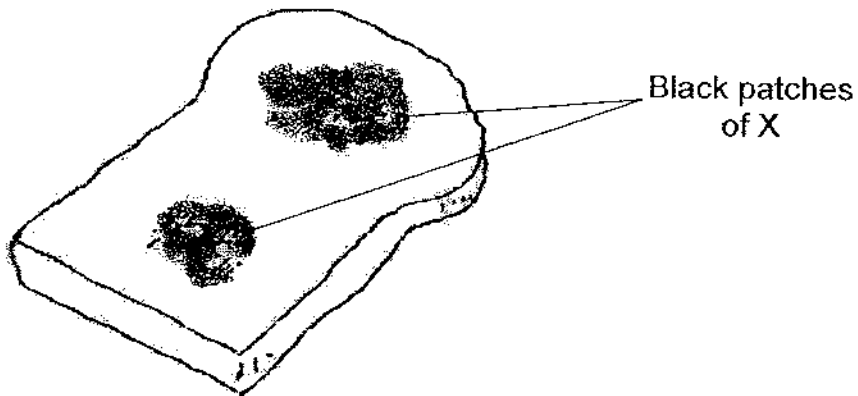
(a) What characteristic of the leaf did May use to classify the leaves? [1]

(b) Suggest **another** characteristic that May can use to classify them in a different way. [1]

27 The diagram below shows a plant. Label the parts of the plant. [2]



- 28 Joel observed some black patches of X on his bread. His classmate, Frederick, told him that the bread cannot be eaten anymore.



- (a) What are the black patches found on the bread? [1]

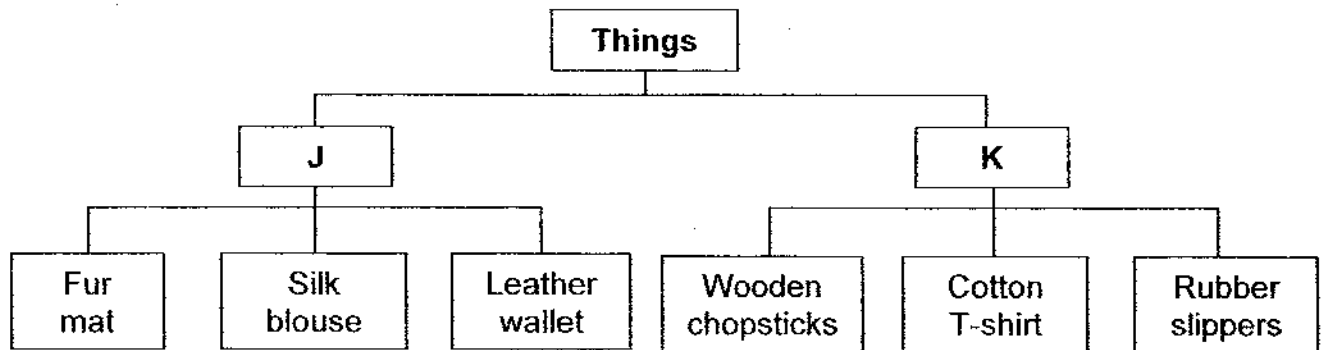
- (b) How does X reproduce? [1]

- (c) Name another organism which reproduces in a similar way as X. [1]

- 29 Read each statement carefully. For each statement, write "T" for *True* or "F" for *False* in the space provided. [2]

	Statement	T or F
(a)	All fish reproduce by laying eggs.	
(b)	Some mammals reproduce by laying eggs.	
(c)	Some insects have more than a pair of wings.	
(d)	An organism which has the head, abdomen and thorax is an insect.	

30 Study the classification table below.



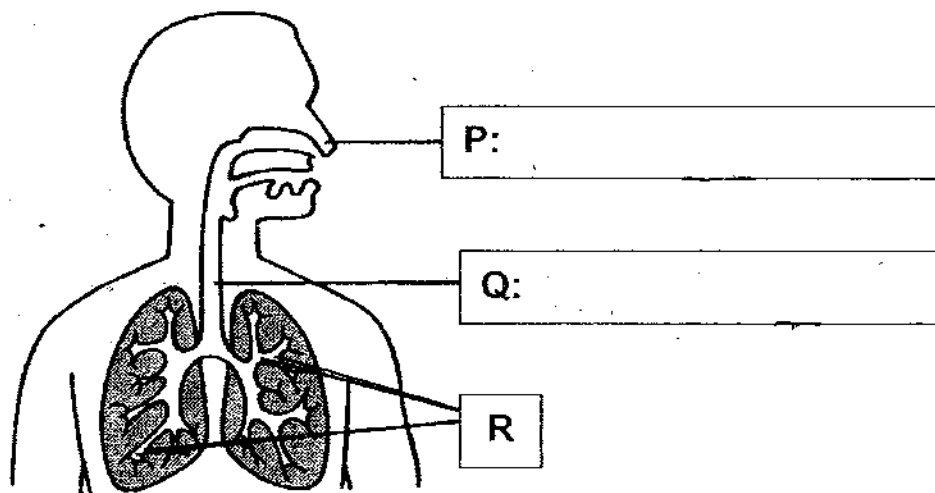
(a) Write suitable headings for J and K. [1]

J: _____

K: _____

(b) Glass cannot be placed under J or K. Why is it so? [1]

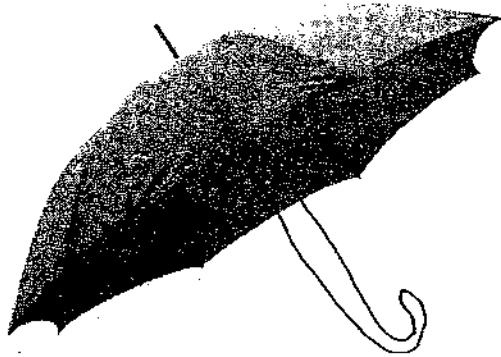
31 The diagram below shows a system in the human body.



(a) In the diagram above, name the parts labelled P and Q. [1]

(b) At Part R, the gas _____ is taken in by the body and _____ is given out. [2]

32 Look at the picture of the umbrella below.



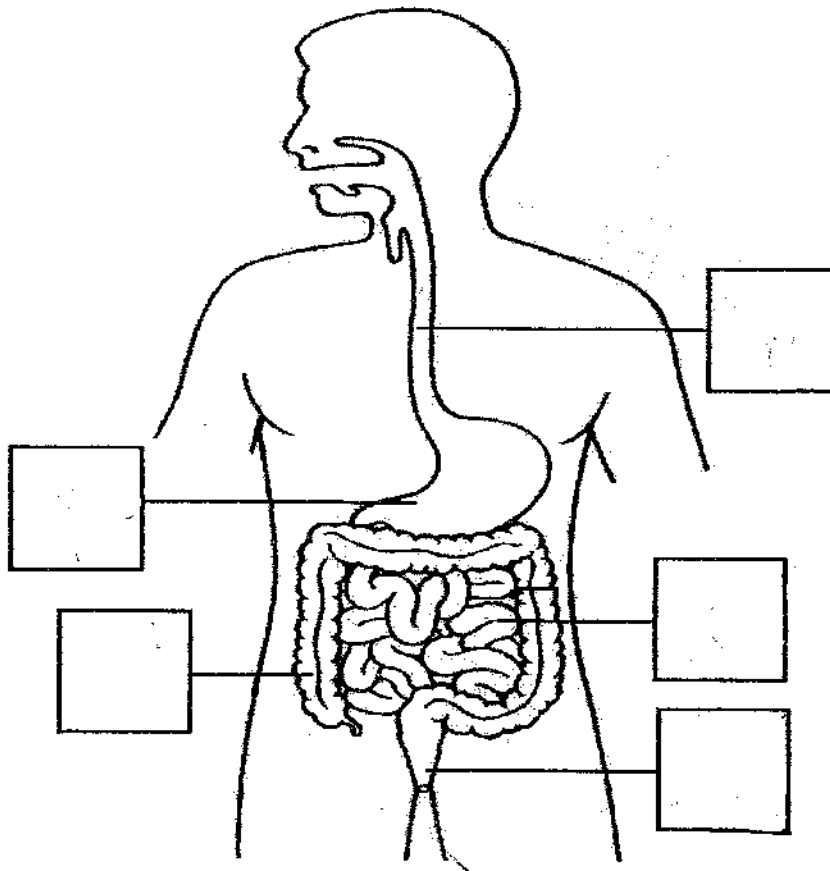
(a) **Draw** in the missing part of the umbrella. [1]

(b) Why is this component important? [1]

33 Read each statement carefully. For each statement, write "T" for *True* or "F" for *False* in the space provided. [3]

	Statement	T or F
1	Air enters the plant through the leaves.	
2	Colourful petals help flowers to attract insects.	
3	Seeds need air, water and sunlight to germinate.	

34 The diagram below shows the digestive system of the human body.



(a) In the boxes provided, write the letters **W**, **X**, **Y** and **Z** to label the following parts: [2]

W :	where food, in the form of a ball, is pushed downwards by strong muscles
X :	where digested food enters the bloodstream
Y :	where partially digested food is further digested
Z :	where undigested food is passed out of the body

(b) Saliva is very important to the digestive system. It helps us to swallow the food more easily. State another importance of saliva. [1]

35 Match the following body systems with their correct functions.

[2]

Circulatory system

Gives the body shape

Respiratory system

Carries food, water and oxygen to all parts of the body

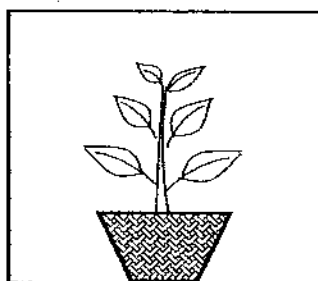
Skeletal system

Helps different parts of the body to move

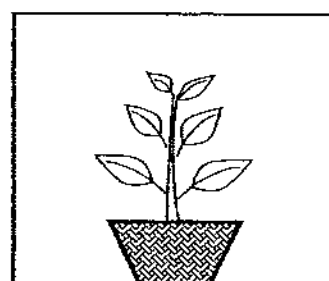
Muscular system

Takes oxygen into the body

36 Daniel made some cardboard boxes with openings on one side. He covered two similar plants, E and F, with these boxes. He watered these plants regularly with equal amount of water and placed them in the same part of the garden.



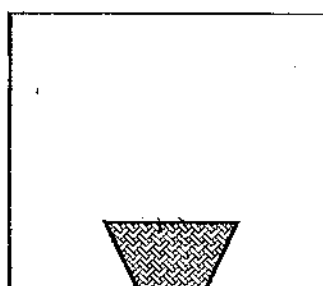
Plant E



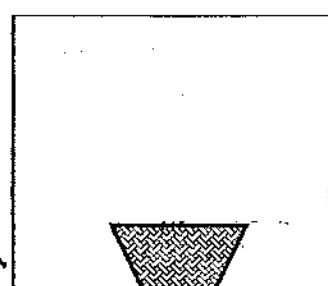
Plant F

In the diagrams below, **draw** what the plants will look like after one week.

[2]



Plant E



Plant F

B 11

Sub-total:

ANSWER SHEET

www.misskoh.com

EXAM PAPER 2008

SCHOOL : ACS PRIMARY SCHOOL
SUBJECT : PRIMARY 3 SCIENCE

TERM : SA 2

Q1	Q2	Q3	Q4	Q5	Q6	Q7	Q8	Q9	Q10	Q11	Q12	Q13	Q14	Q15	Q16	Q17
4	1	1	3	1	3	3	4	3	3	3	2	2	4	3	2	4

Q18	Q19	Q20
2	1	1

21)a)The four things can all fly.

b)Living things

butterfly

bird

Non-living things

plane

helicopter

22)a)The water moss fern makes their own food while the swordtail feeds on other living things.

b)Both of them live on land.

c)X.

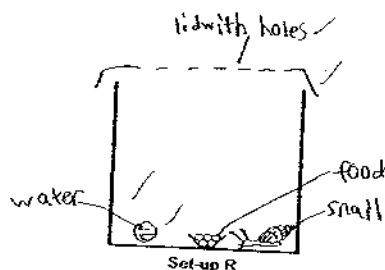
23)a)E: 4 legs F: 6 legs

b)Max had the characteristic of what they eat in mind.

24)a)C b)A c)D d)B

25)a)She observed that the snail in set-up P was dead.

b)



26)a)According to the shape.
b)According to what type of edge.

27)A: flower B: fruit C: roots D: leaf

28)a)The black patches found on the bread are bread mould.
b)X reproduces by spores.
c)Mushroom.

29)a)F b)T c)T d)T

30)a)J: From animals K: From plants
b)It is because glass is fro the ground.

31)a)P: nose Q: wind pipe
b)oxygen, carbon dioxide

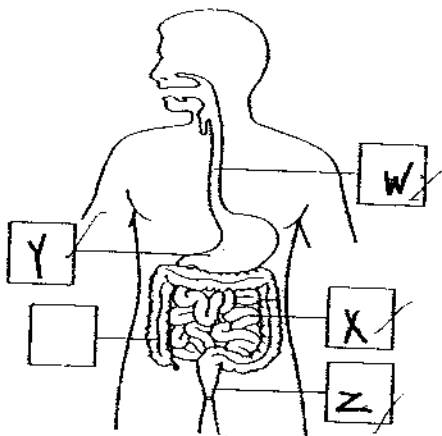
32)a)



b)It is to let us hold the umbrella.

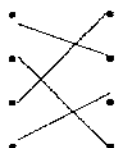
33)1)T 2)T 3)F

34)a)

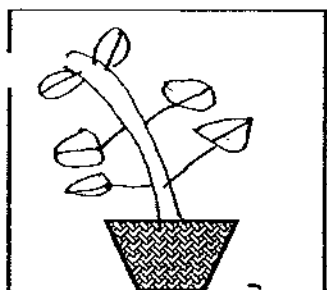


34)b)It breaks down food to smaller substance for easier digestion.

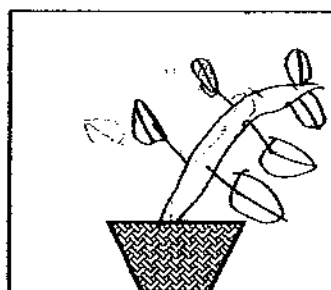
35)



36)



Plant E



Plant F